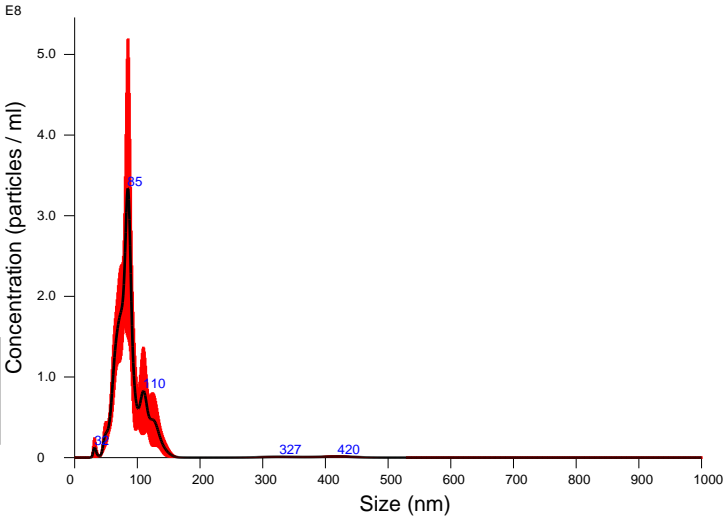
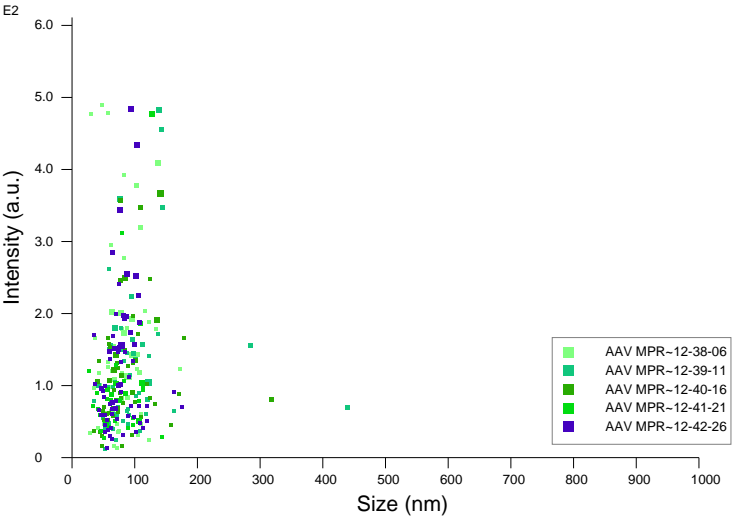


FTLA Concentration / Size graph for Experiment:
AAV MPRA GFP 1000x 5 60 120 2024-12-18 12-35-07



Averaged FTLA Concentration / Size for Experiment:
AAV MPRA GFP 1000x 5 60 120 2024-12-18 12-35-07
Error bars indicate + / - 1 standard error of the mean

<div><div>Included Files</div><div>AAV MPRA GFP 1000x 5 60 120 2024-12-18 12-38-06 AAV MPRA GFP 1000x 5 60 120 2024-12-18 12-39-11 AAV MPRA GFP 1000x 5 60 120 2024-12-18 12-40-16 AAV MPRA GFP 1000x 5 60 120 2024-12-18 12-41-21 AAV MPRA GFP 1000x 5 60 120 2024-12-18 12-42-26</div><div><div>Details</div><div><div>NTA Version:NTA 3.4 - Sample Assistant Build 3.4.4 - SA</div><div>Script Used:SOP Standard Measurement 12-34-44PM 18~</div><div>Time Captured:12:35:07 18/12/2024</div><div>Operator:Jitka</div><div>Pre-treatment:</div><div>Sample Name:</div><div>Diluent:pbs</div><div>Remarks:</div></div><div><div>Capture Settings</div><div><div>Camera Type:sCMOS</div><div>Laser Type:Blue405</div><div>Camera Level:12</div><div>Slider Shutter:1200</div><div>Slider Gain:146</div><div>FPS:25.0</div><div>Number of Frames:1498</div><div>Temperature:25.0 - 25.0 °C</div><div>Viscosity:1.0 cP</div><div>Dilution factor:1 x 10e3</div><div>Syringe Pump Speed:120</div></div><div><div>Analysis Settings</div><div><div>Detect Threshold:5</div><div>Blur Size:Auto</div><div>Max Jump Distance:Auto: 14.6 pix</div></div></div></div></div></div>	<div><div>Results</div><div><div>Stats: Merged Data</div><div><div>Mean:91.4 nm</div><div>Mode:84.9 nm</div><div>SD:43.0 nm</div><div>D10:63.2 nm</div><div>D50:84.3 nm</div><div>D90:120.5 nm</div></div><div><div>Stats: Mean +/- Standard Error</div><div><div>Mean:91.4 +/- 5.4 nm</div><div>Mode:86.3 +/- 6.6 nm</div><div>SD:33.5 +/- 12.2 nm</div><div>D10:65.7 +/- 2.7 nm</div><div>D50:86.8 +/- 3.3 nm</div><div>D90:114.5 +/- 9.2 nm</div></div><div><div>Concentration (Upgrade): 1.04e+10 +/- 6.65e+08 particles/ml</div><div>0.7 +/- 0.1 particles/frame</div><div>1.0 +/- 0.1 centres/frame</div></div><div><div>Concentration measurements may be unreliable</div><div>See summary file for more info</div></div></div></div></div>
--	--



Script Used: (Full Text):

SOP Standard Measurement 12-34-44PM 18Dec2024.txt